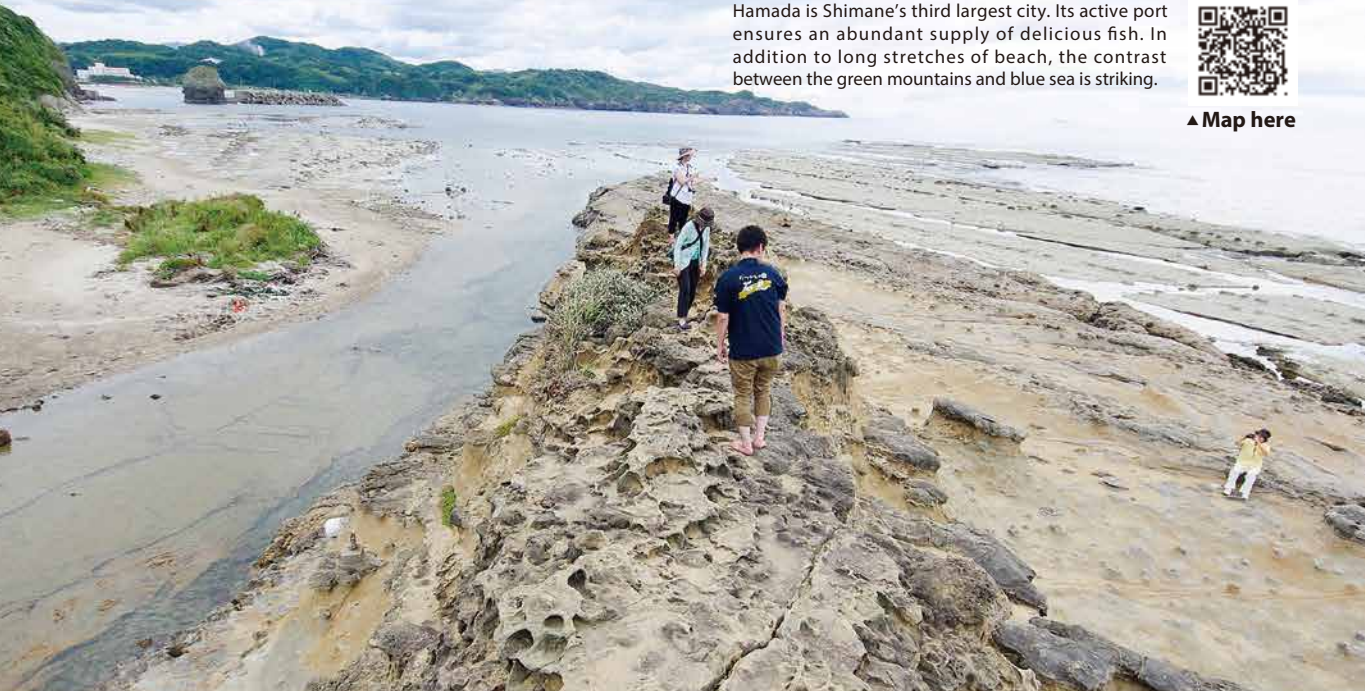


# Hamada 浜田

Hamada is Shimane's third largest city. Its active port ensures an abundant supply of delicious fish. In addition to long stretches of beach, the contrast between the green mountains and blue sea is striking.



▲ Map here



## ACCESS to HAMADA

- Train**  
 JR Masuda → JR Hamada (50min Local, 30min Ltd. Express)  
 JR Matsue → JR Hamada (1 hr 30min Ltd. Express)
- Bus**  
 Hiroshima → Hamada (2hr)

## Tatamigaura Seaside 畳ヶ浦

This area is a nationally designated natural monument. After passing through a chilly, and supposedly haunted, cave, you exit onto a picturesque stretch of beach where you can explore mysterious rock and shell fossil formations created by wave erosion over 160 million years ago.



**Iwami Seaside Park**  
 石見海浜公園  
 [Iwami Kaihin Koen]

This prefectural park offers a 5.5-kilometer stretch of white sand beach and other walking trails. In summer, you can enjoy a variety of water sports including jet skiing, snorkeling, banana boat, stand up paddle boarding, etc. (separate fees apply). Don't miss the gorgeous sunsets!

- ¥ Self-catering Cabins: ¥3,830; Constructed Tent Sites: ¥6,440; Free Tent Sites (first come, first served; bring your own gear).
- ☎ 8:30am-5:30pm, Closed Dec.28 to Jan.3



Beluga Whale-  
 Happy Bubble Ring®

**Shimane Aquarium AQUAS**  
 しまね海洋館アクアス  
 [Shimane Kaiyokan Akuasu]

AQUAS is an aquarium that houses 400 species with over 10,000 marine creatures. The aquarium is famous for its cute beluga whales. They give a charming performance of "bubble rings", which are made when the belugas exhale from their mouths. In winter, you can watch king penguins taking a walk around the aquarium. There is also a large park and a play area behind the building and occasional Iwami Kagura performances on weekends. It is a 10-min. walk from JR Hashi Station.

- ¥ ¥1,540 ☎ Sep. 1 - Jul. 19: 9am-5pm
- Jul. 20 - Aug. 31: 9am-6pm, Closed Tues. (or Wed. if Tues. is a holiday)
- \*Open on Tuesdays during the following dates: Apr. 29 - May 5, Jul. 20 - Aug. 31.



## Sekishu Washi Center 石州和紙会館

[Sekishu Washi Kaikan]

Sekishu washi has a long history in the region and Sekishu banshi, a type of Sekishu washi, was recently designated a UNESCO intangible cultural heritage item. This center was created to train future generations of craftsmen and showcase the traditional skills involved in making washi paper. You can try making your own washi paper, enjoy art exhibits and purchase souvenirs.

FREE

- ☎ 9am-5pm, Closed Monday (or Tues. if Mon. is a holiday), New Year holidays
- Washi paper making from ¥500



Orochi serpent



## Kinta Berryne Farm 金た農園ベリーネ

[Kinta Noen Berine]

A unique farm of greenhouses where you can sample multiple varieties of delicious strawberries and grapes. Come sample some of the perfect, sweet fruit Japan is famous for! There is also a cute café where you can enjoy light meals and drinks.

- Fruit picking ☎ 10am-4pm
- Strawberries: ☎ Jan.-May, Closed Tuesday
- ¥ ¥1,500/person, 50min., all-you-can-eat
- \*Reservations required
- Grapes: ☎ Late Aug.-early Oct.
- ¥ ¥1,600/kg
- Café: 11am-4pm, Closed Tuesday



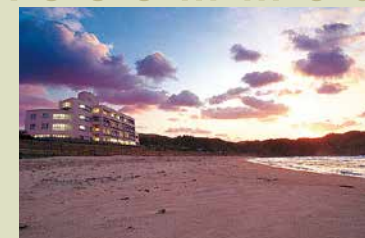
## Camborough ケンボロー

[kenboro]

A local favorite, this restaurant serves only its own brand of pork, which is raised at a nearby farm. Pork cutlets are the specialty and lunchtime set meals are a great bargain.

- ☎ Lunch: 11am-3pm (Last order 2pm)
- Dinner: 5pm-11pm (Last order 10pm)
- Closed Tues. (or Wed. if Tues. is a holiday) and the 1st Mon. to Wed. of Feb. and Sept.

## Accommodation



### Senjoen 国民宿舎 千畳苑

This simply appointed hotel offers a choice of Western or Japanese style rooms. In addition to beautiful meals of freshly caught seafood, you can enjoy sweeping views of the beach and ocean from the large bath on the top floor.

ACCOMM. HOTEL ¥¥

- ☎ 2164 Shimoko-cho, Hamada-shi
- ☎ 0855-28-1255
- Restaurant ☎ 11am-3pm (Last order 2:45pm)
- DAY TRIP BATHING
- ¥ ¥360 ☎ 10am-8pm, Summer: 5pm-8pm



Kaizokudon ¥1,400

### Hotel Matsuo ホテル松尾

At this hotel, you can enjoy authentic Japanese cuisine that showcases the fresh abundance of the nearby Sea of Japan. The restaurant is also open for lunch.

HOTEL ¥¥

- ☎ 4185 Kurokawa-cho, Hamada-shi
- ☎ 0855-22-2520
- Restaurant ☎ Lunch: 11am-2pm
- Dinner: 5pm-9pm (Last order 8:30pm)



### Green Rich Hotel Hamada Ekimae

Just a 2-minute walk from Hamada Station, this basic business hotel offers an affordable place to stay for a night or two while enjoying the surrounding area. It has a large bath with a sauna.

HOTEL ¥

- ☎ 86-19 Asai-cho, Hamada-shi
- ☎ 0855-24-1234

Inquiries Hamada City Dept. of Tourism  
 www.kankou-hamada.org ✉ kankou@city.hamada.shimane.jp

Hamada Tourist Information Office  
 (on the 1st floor of Hamada Sta.) 9am-6pm

